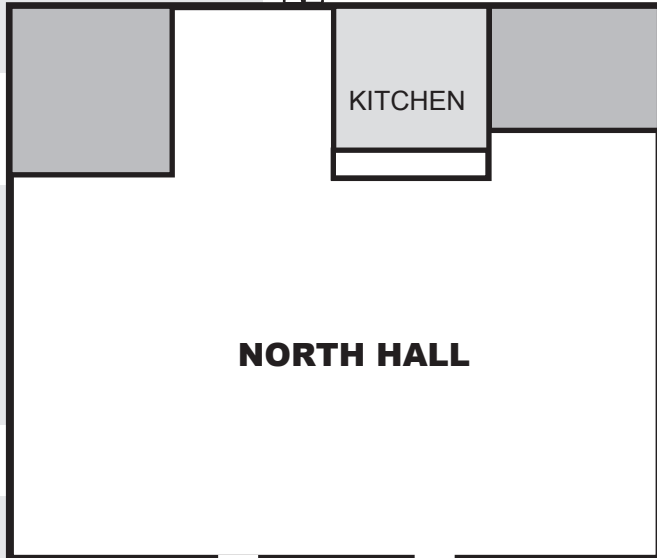


LOADING ZONE

N

**NON-COMMERCIAL
REGISTRATION**

DOOR 8



MEN

NORTH HALL

WOMEN

PUBLIC ENTRANCE

10

17

W

E

EAST HALL

**SOUTH
HALL**

**DOOR 16
COMMERCIAL
REGISTRATION**

LOADING ZONE

11

12

MAP OF THE WAUKESHA COUNTY EXPO FORUM BUILDINGS
WAUKESHA COUNTY 4-H HORSE ASSOCIATION ANNUAL TACK SALE

Please check in at the designated Commercial or Non-Commercial doors.
 COMMERCIAL= DOOR 16 NON-COMMERCIAL= DOOR 8

S